



STANDARD CONFIGURATIONS

- > Industrial PC
- > Unlimited Recipe Teaching
- > Unlimited Point Teaching
- > Soldering Controller

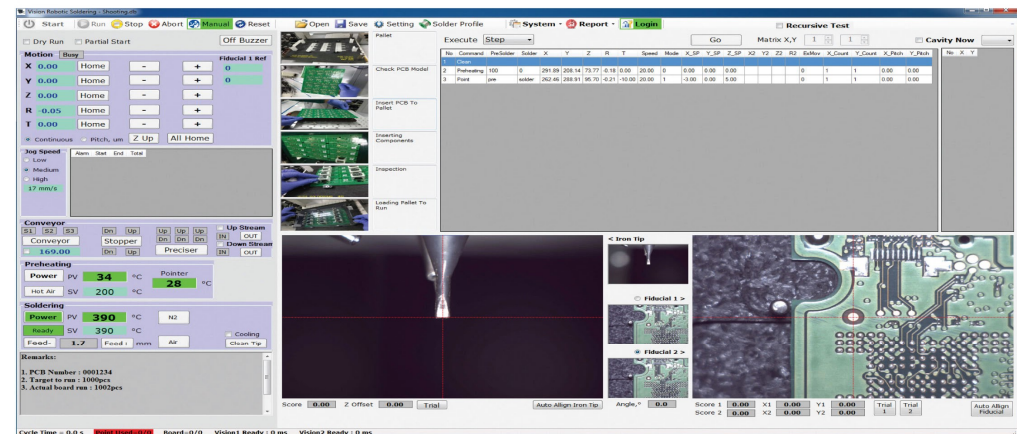
- > Iron Tip Cleaner
- > Iron Tip Force Detect Sensor
- > Soldering Head
- > Solder Feeder
- > "V" Cut
- > Hot Air Blow System
- > Close Loop Laser Temperature Detect System
- > Solder Feed Tube Set
- > Tower Light

MECHANICAL SPECIFICATIONS

Number of Axis	5 Axis control with Ball Screw (Close Loop Stepper)			
Range of Operation	X/Y-axis : 400mm	Z-axis : 150mm	R-axis : ±360°	T-axis : +/- 45°
T-axis with Harmonic Drive Motor				
Maximum Moveable Weight (workpiece)	5kg			
Maximum Speed (PTP)	X/Y-axis : 500mm/sec	Z-axis : 500mm/sec	R-axis : 360°/sec	
Repeatability Accuracy	X/Y-axis : ±0.02mm	Z-axis : ±0.02mm	R-axis : ±15sec	

GENERAL

- Air : Dry air 4-5kg/cm²
- Tip Temperature Range : 420°C
- Heater Element : 200W Cross Heater*²
- Application Solder Diameter : Ø0.5-1.2(Specified)
- Working Table Size : 400mm x 400mm
- Solder Feeding Control : Stepper Motor
- Weight: Approx. : 1000kg
- Machine Dimensions : W1200mm x L1100mm x H1950mm
- Power Supply : 240VAC Ø 50/60Hz



ADDITIONAL FEATURES



OPTIONAL FEATURES