

MECHANICAL SPECIFICATIONS

MAXIMUM MOVEMENT SPEED (PTP)

- X, Y-axis: 500mm/sec. (0.1-500mm/sec)
- Z-axis: 250mm/sec. (0.1-250mm/sec)
- R-axis: 800°/sec. (8-800°/sec)

REPEATABILITY ACCURACY

- X & Y-axis: ±0.02mm
 - Z-axis: ±0.02mm
 - R-axis, ±0.02mm
 - Theta axis: ±0.02mm
- Heater Alarm Value: ±0-100°C
 - Heater Element: 200W Cross Heater*2
 - Application Solder Diameter: Ø0.5-1.2(Specified)
 - Solder Feeding Control: Stepper Motor
 - Alarms : Out of Solder, Solder Jamming, Heater Alarm

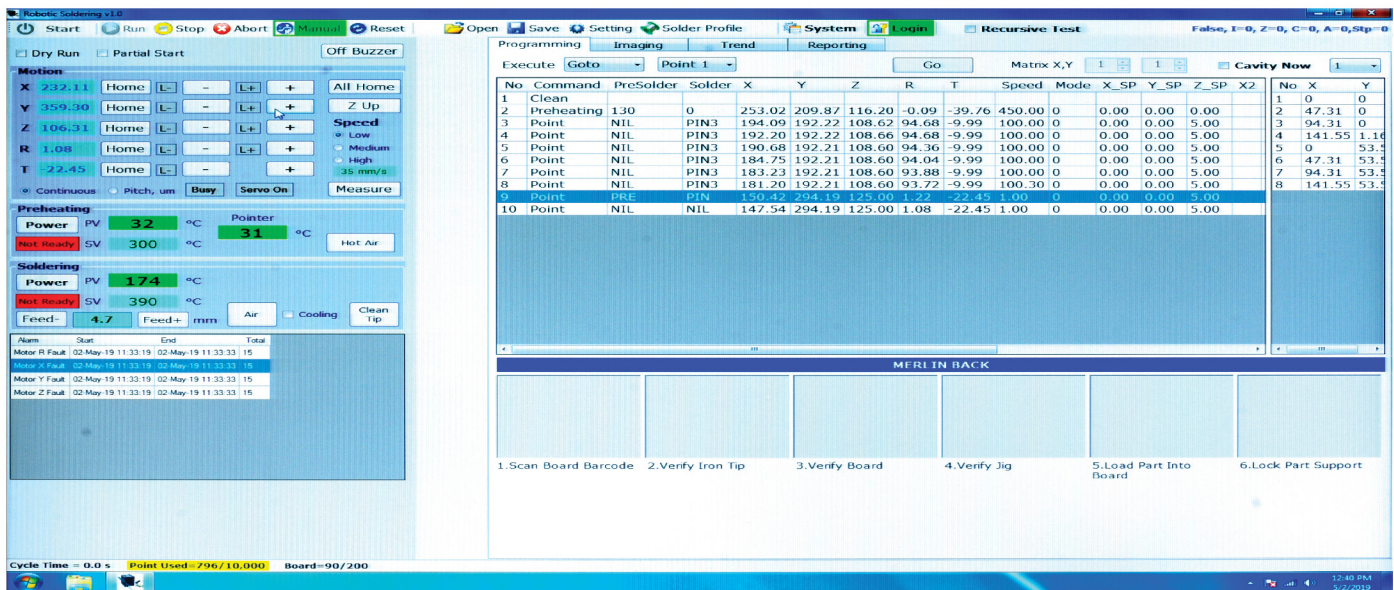
Model	EX-393
Outside Dimension L*W*H	1000 x 1000 x 1850mm
Range of Operation : (5-axis)	
X-axis	400mm
Y-axis	400mm
Z-axis	150mm
R-axis	±180°
Theta-axis	±45°
Air Control	Dry air 4-5kg/cm ²
Relative Humidity	20-95% (non-condensing)
Weight approx. (kg)	300
Power Supply	240VAC 50/60HZ
Conveyor movement	From Left to Right
Conveyor open width (max.)	391mm

ROBOTIC SOLDERING MACHINE SPECIFICATIONS

Easy-access soldering software can make changing in :

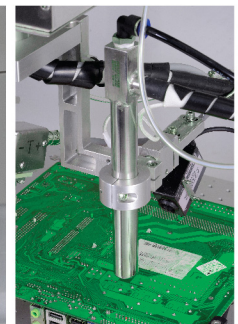
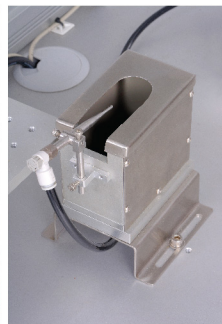
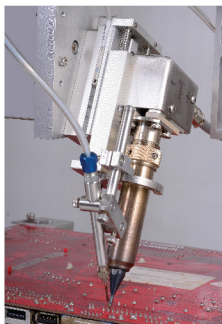
- Temperature of heater
- Unlimited Position teaching
- Unlimited Soldering conditions
- Robots overall speed
- Radius of iron tip

All the functions of the robots can be manipulated by using Desktop PC.



ADDITIONAL FEATURES

Auto change angle according to Soldering Point Teaching or Product Recipe.



Iron-Tip Cleaner

V-Cut Solder Wire Feeder

Barcode Scanner

Fiducial Camera

Hot Air Heater come with Close Loop Laser Temperature Sensor Monitoring